

Analyzers

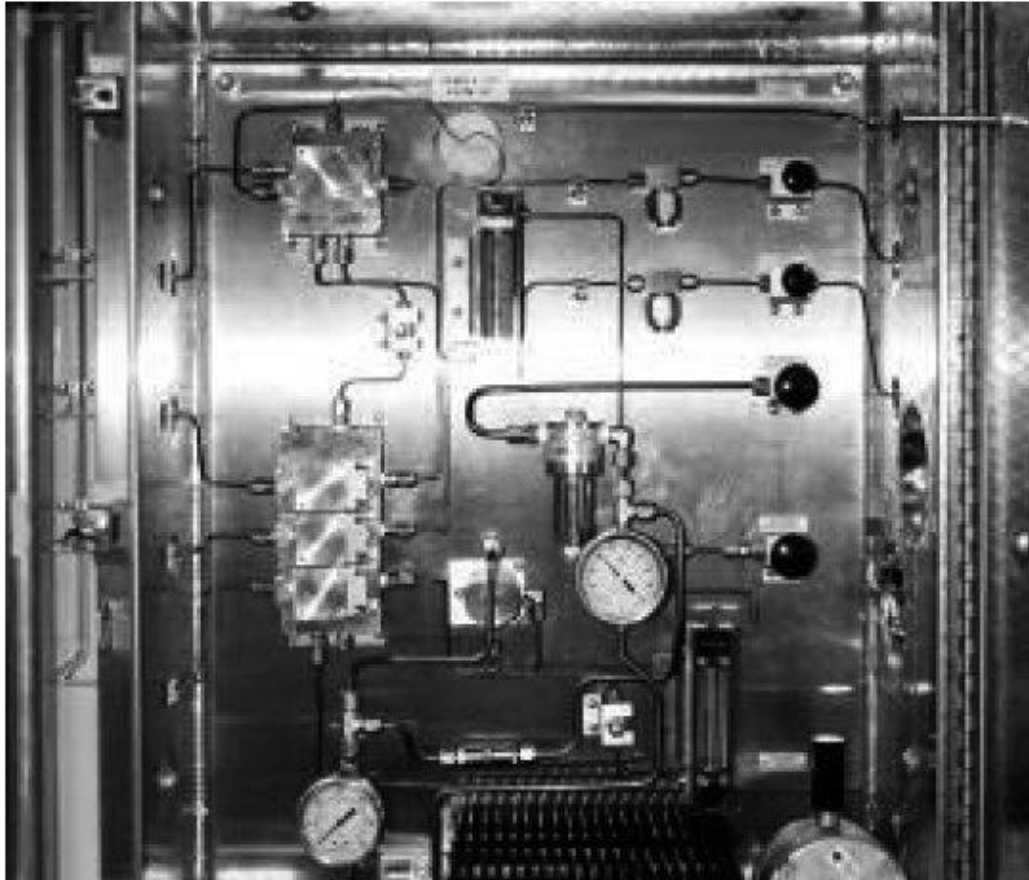


Figure 4-1. Example Sampling System

- Difference between sampling and situ analyzers is addressed
- Impact of sampling system on maintenance and measurement delay is highlighted

Analyzer Example



Figure 4-2. In-Situ Flue Gas Oxygen Analyzer



Figure 4-3. pH/ORP Transmitter

- A couple of common situ analyzers are addressed to show features and options
 - Flue Gas O₂
 - pH/ORP
- Calibration of analyzer and role of sample/hold when used in control is addressed.